



**India Meteorological Department  
(Ministry of Earth Sciences)**

HOURLY UPDATE ON SEVERE CYCLONIC STORM '**TAUKTAE**' OVER  
SAURASHTRA

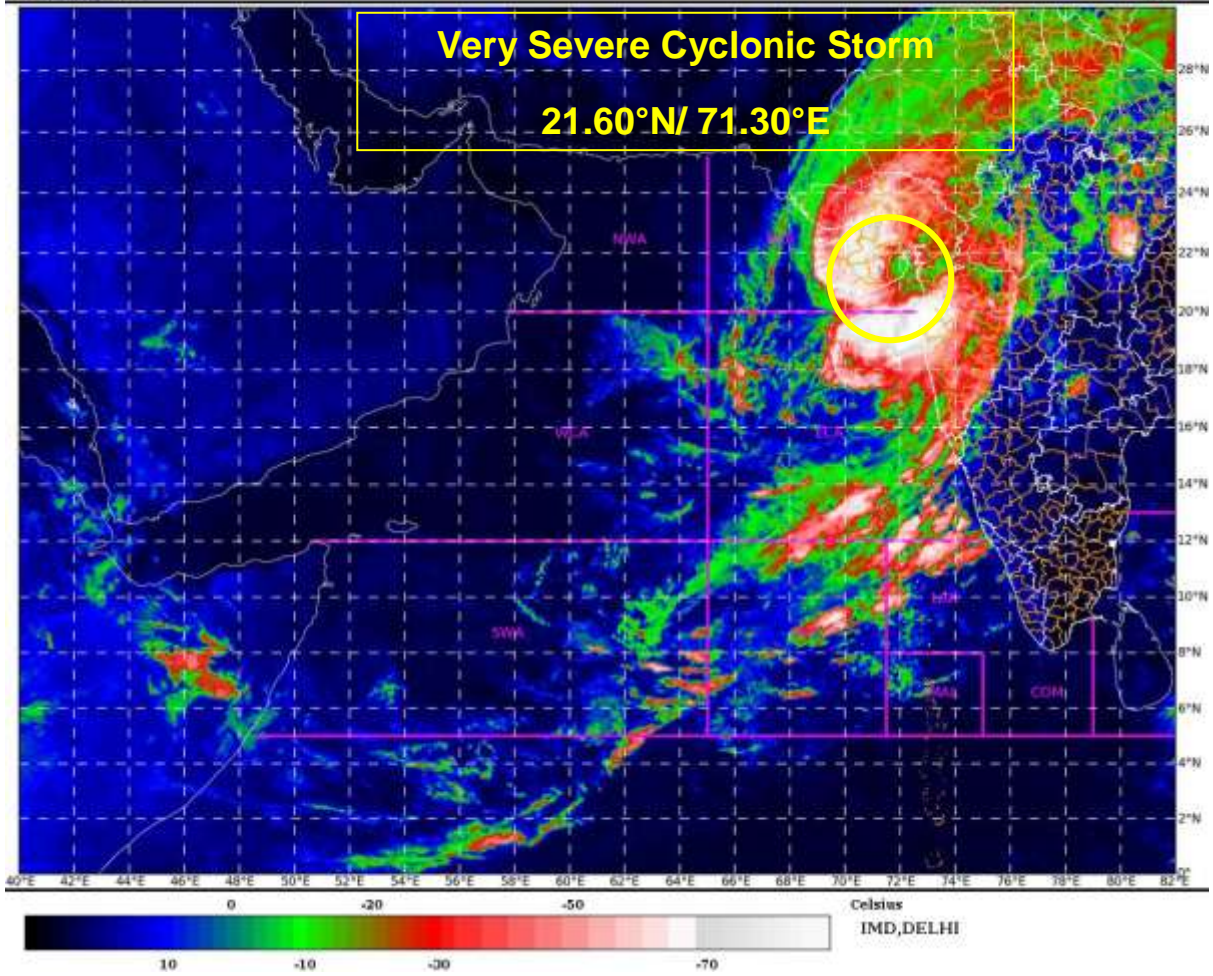
**BULLETIN NO. 23**

DATE: 18-05-2021

TIME OF ISSUE: 0950 HRS IST

<b>DATE/TIME (IST) OF OBSERVATION</b>	<b>BASED ON 18-05-2021 (0830 HRS IST)</b>
LOCATION LATITUDE/LONGITUDE	THE <b>SEVERE CYCLONIC STORM 'TAUKTAE'</b> LAY CENTRED AT 0830 HRS IST OF 18 <sup>TH</sup> MAY 2021 OVER SAURASHTRA, NEAR LAT. 21.6°N AND LONG. 71.30°E, ABOUT <b>210 KM SOUTHWEST OF AHMEDABAD, 130 KM SOUTH-SOUTHWEST OF SURENDRANAGAR AND 10 KM EAST OF AMRELI.</b>
CURRENT INTENSITY NEAR CENTRE	105-115 KMPH GUSTING TO 125 KMPH
PAST MOVEMENT	SEVERE CYCLONIC STORM ' <b>TAUKTAE</b> ' MOVED NORTH-NORTHEAST WARDS WITH A SPEED OF 10 KMPH DURING PAST 06 HOURS.
FORECAST MOVEMENT AND INTENSITY	IT WOULD MOVE NORTH-NORTHEASTWARDS AND WEAKEN GRADUALLY INTO A CYCLONIC STORM DURING NEXT 03 HOURS.
FORECAST RAINFALL	LIGHT TO MODERATE RAINFALL AT MANY PLACES WITH HEAVY TO VERY HEAVY FALLS AT ISOLATED PLACES OVER GUJARAT REGION AND SAURASHTRA ON 18 <sup>TH</sup> MAY.
FORECAST WIND SPEED (KMPH)	GALE WINDS SPEED REACHING 105-115 KMPH GUSTING TO 125 KMPH LIKELY TO PREVAIL ALONG & OFF GUJARAT COAST AMRELI, BHAVNAGAR, BOTAD; 90-110 KMPH GUSTING TO 120 KMPH OVER DIU, GIR SOMNATH, JUNAGARH, KHEDA, BHARUCH, ANAND, SOUTH AHMEDABAD AND 60-70 KMPH GUSTING TO 80 KMPH OVER JAMNAGAR, PORBANDAR, RAJKOT & MORBI DURING NEXT 3 HOURS AND GRADUALLY DECREASE THEREAFTER. SQUALLY WIND SPEED REACHING 45-55 KMPH GUSTING TO 65 KMPH LIKELY TO PREVAIL ALONG & OFF DADRA, NAGAR HAVELI, DAMAN, VALSAD, NAVSARI, SURAT, SURENDRA NAGAR AND RAJKOT DISTRICTS AND 40-50 KMPH GUSTING TO 60 KMPH OVER DEVBHOO MI DWARKA & KUTCH TILL DURING NEXT 3 HOURS AND GRADUALLY DECREASE THEREAFTER.

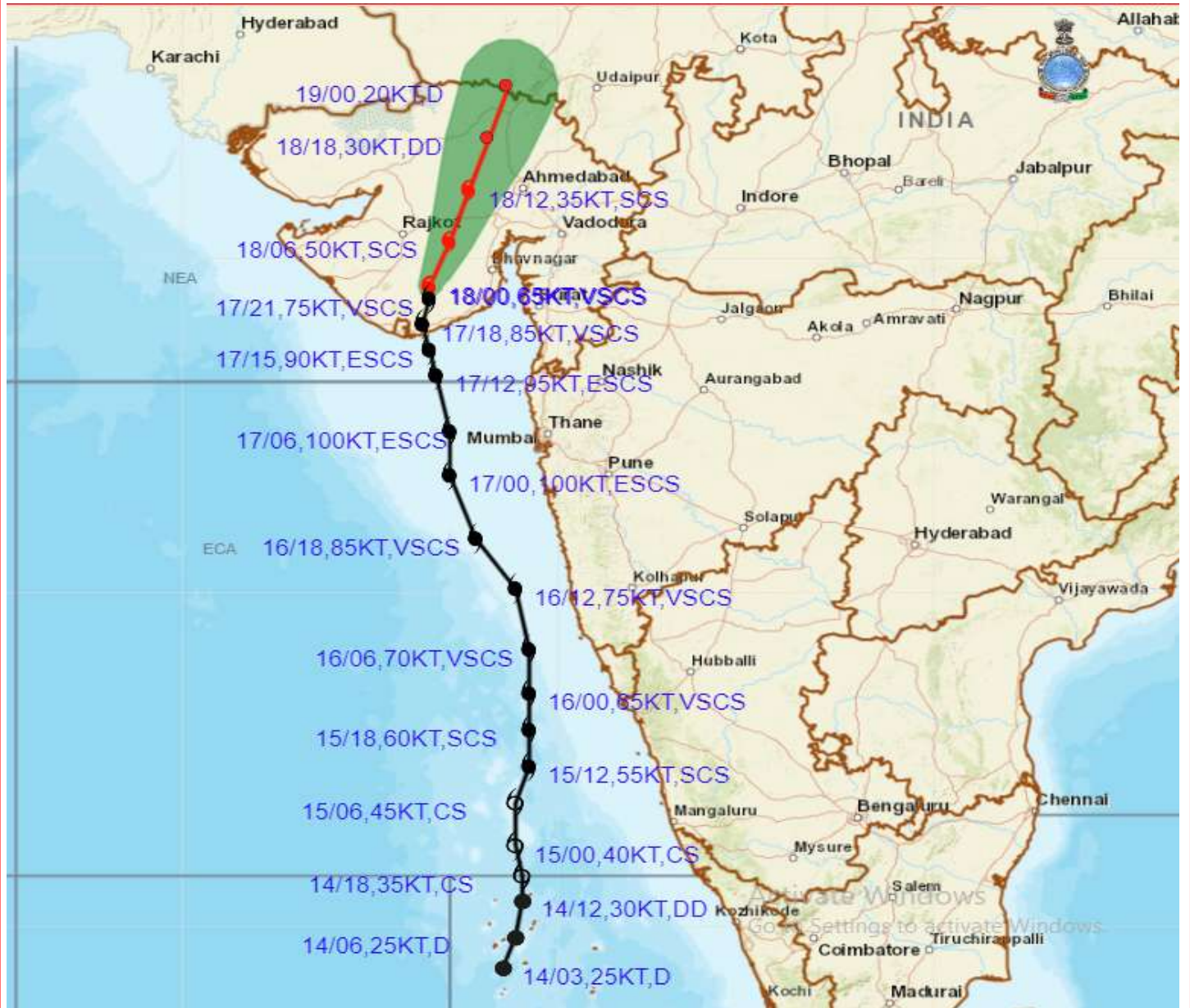
<p><b>FORECAST STORM SURGE</b></p>	<p>TIDAL WAVE ABOVE ASTRONOMICAL TIDE IS LIKELY TO INUNDATE COASTAL AREAS DURING NEXT 03 HOURS, AS PER DETAILS BELOW: ABOUT 1-2 METER (M) OVER ANAND, AMRELI, GIR SOMNATH, DIU &amp; BHAVNAGAR, BHARUCH, SOUTHERN PARTS OF AHMEDABAD DURING NEXT 03 HOURS.</p>
<p><b>FORECAST FOR COASTAL MAHARASHTRA</b></p>	<p>ISOLATED HEAVY RAINFALL LIKELY OVER NORTH KONKAN DURING NEXT 06 HOURS. SQUALLY WIND SPEED REACHING 45-55 GUSTING TO 65 KMPH ALONG &amp; OFF EXTREME NORTH MAHARASHTRA COAST AND SPEED REACHING 40-50 GUSTING TO 60 KMPH ALONG &amp; OFF REMAINING PARTS OF NORTH MAHARASHTRA COAST DURING NEXT 03 HOURS.</p>
<p><b>REALISED WEATHER GUJARAT &amp; DIU</b></p>	<p>WIND REPORTED AT 0830 HOURS IST OF 18.05.2021: BHAVNAGAR: 74 KMPH, AMRELI: 41 KMPH, SURAT: 46 KMPH, RAJKOT: 46 KMPH, KESHOD: 30 KMPH, PORBANDER: 44 KMPH AND SURAT: 52 KMPH.</p> <p>RAINFALL IN CM (REPORTED DURING 0830 HOURS IST OF 17.05.2021 TO 0830 HOURS IST OF 18.05.2021): BAGASARA (AMRELI DISTT): 21.2 CM, SURAT- 9.3 CM, DIU: 8.6 CM, BHAVNAGAR: 7.8 CM, AMRELI – 12.5, GIR GADHADA (GIR SOMENATH)-18.5, UNA (GIR SOMENATH): 17.5 CM, UMERGAM (VALSAD): 18.3 CM, SAVARKUNDLA (AMRELI): 16.7 CM, PALITANA (BHAVNAGAR): 15.8 CM, AMRELI (AMRELI); 13..1 CM, MAHUA (BHAVNAGAR): 12.8 CM, RAJULA (AMRELI): 12.7; KHAMBHA (AMRELI): 12.7 CM, BABRA (AMRELI): 12.7 CM, GADHDA (BOTAD): 10.5 CM, VISAVDAR (JUNAGARH): 9.7 CM, UMRALA (BHAVNAGAR): 8.5 CM, DHARI (AMRELI): 7.2 CM, BHAVNAGAR (BHAVNAGAR): 7.1 CM, JESAR (BHAVNAGAR): 6.8 CM. .</p>







# OBSERVED AND FORECAST TRACK ALONGWITH CONE OF UNCERTAINTY OF VERY SEVERE CYCLONIC STORM "TAUKTAE" OVER SAURASHTRA BASED ON 0000 UTC OF 18<sup>TH</sup> MAY, 2021



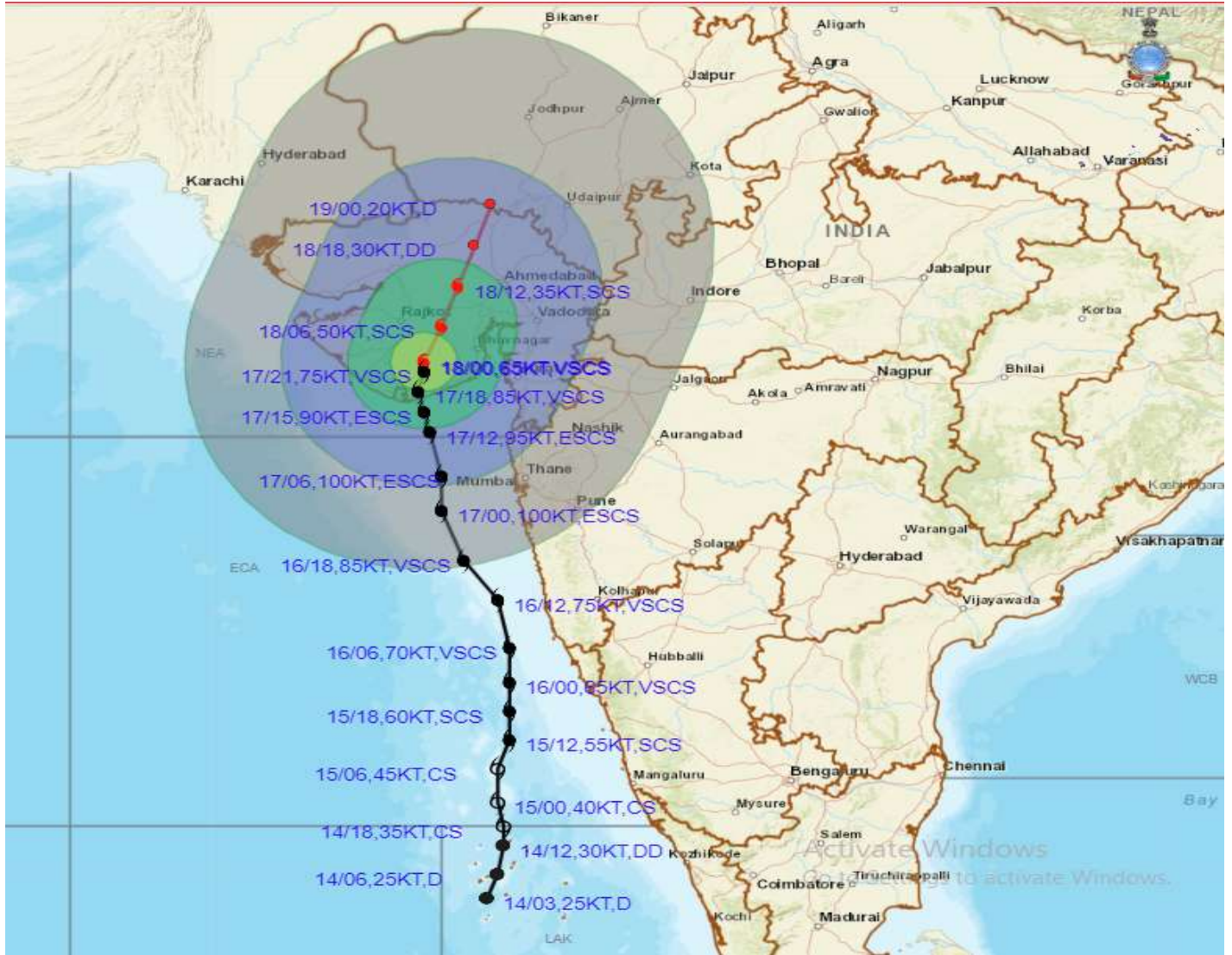
DATE/TIME IN UTC  
IST=UTC + 0530  
L: LOW PRESSURE AREA  
WML: WELL MARKED LOW PRESSURE AREA  
D: DEPRESSION (17-27 KT)  
DD: DEEP DEPRESSION (28-33 KT)  
CS: CYCLONIC STORM (34-47 KT)  
SCS: SEVERE CYCLONIC STORM (48-63 KT)  
VSCS: VERY SEVERE CYCLONIC STORM (64-89 KT)  
ESCS: EXTREMELY SEVERE CYCLONIC STORM (90-119 KT)  
SuCS: SUPER CYCLONIC STORM ( $\geq$  120 KT)

● LESS THAN 34 KT  
⊙ 34-47 KT  
⊙  $\geq$  48 KT  
— OBSERVED TRACK  
— FORECAST TRACK  
▲ CONE OF UNCERTAINTY





## OBSERVED AND FORECAST TRACK ALONGWITH CONE OF UNCERTAINTY OF VERY SEVERE CYCLONIC STORM "TAUKTAE" OVER SAURASHTRA BASED ON 0000 UTC OF 18<sup>TH</sup> MAY, 2021

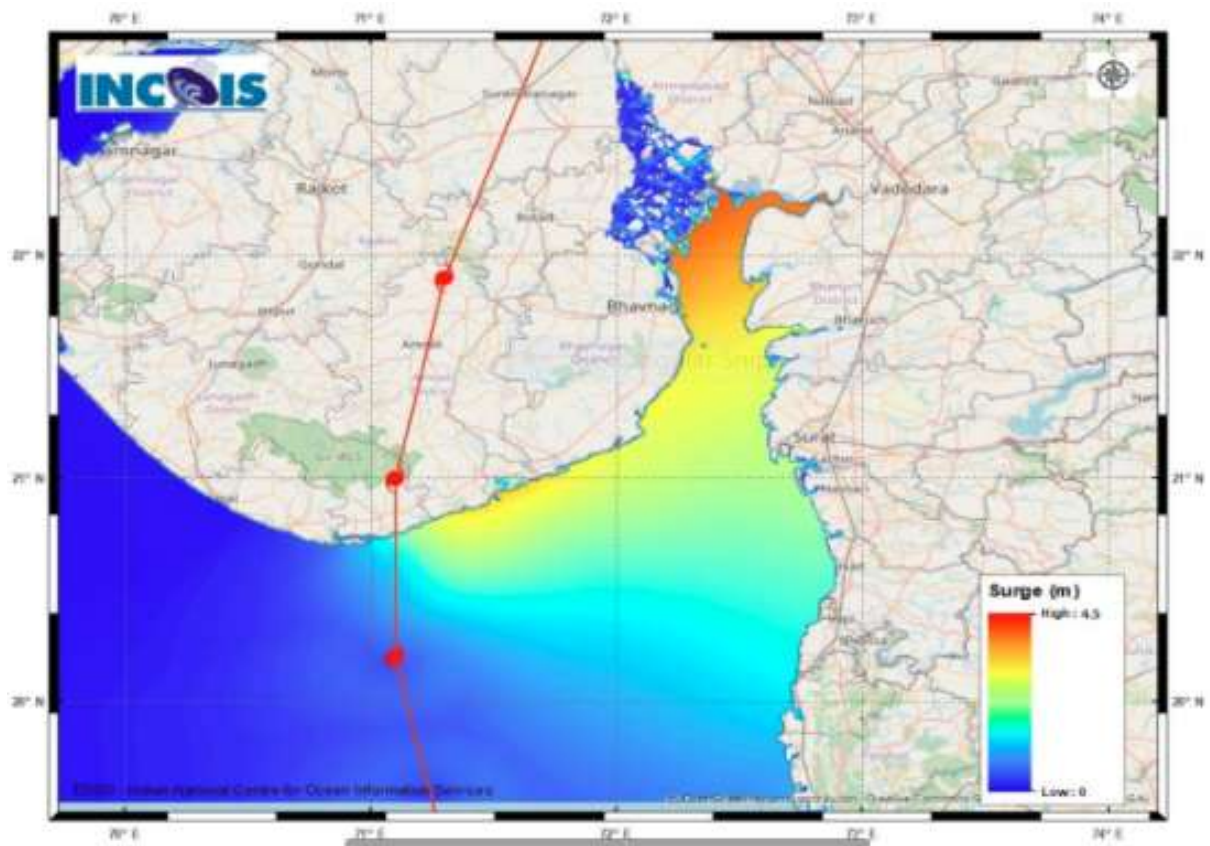


DATE/TIME IN UTC  
 IST=UTC + 0530  
 L: LOW PRESSURE AREA  
 WML: WELL MARKED LOW PRESSURE AREA  
 D: DEPRESSION (17-27 KT)  
 DD: DEEP DEPRESSION (28-33 KT)  
 CS: CYCLONIC STORM (34-47 KT)  
 SCS: SEVERE CYCLONIC STORM (48-63KT)  
 VSCS: VERY SEVERE CYCLONIC STORM (64-89 KT)  
 ESCS: EXTREMELY SEVERE CYCLONIC STORM (90-119 KT)  
 SuCS: SUPER CYCLONIC STORM ( $\geq$  120 KT)

● LESS THAN 34 KT  
 ○ 34-47 KT  
 ●  $\geq$  48 KT  
 — OBSERVED TRACK  
 — FORECAST TRACK  
 ▲ CONE OF UNCERTAINTY  
**AREA OF MAXIMUM SUSTAINED WIND SPEED:**  
 ■ 28-33 KT (52-61 KMPH)  
 ■ 34-49 KT (62-91 KMPH)  
 ■ 50-63 KT (92-117 KMPH)  
 ■  $\geq$  64 KT ( $\geq$ 118 KMPH)

### IMPACT OVER THE SEA

MSW (knot/kmph)	Impact	Action
28-33 (52-61)	Very rough seas	Total suspension of fishing operations
34-49 (62-91)	High to very high seas	Total suspension of fishing operations
50-63 (92-117)	Very high seas	Total suspension of fishing operations
$\geq$ 64 ( $\geq$ 118)	Phenomenal	Total suspension of fishing operations



STORM SURGE GUIDANCE FROM INCOIS BASED ON 0530 HRS IST OBSERVATIONS

**STORM SURGE HEIGHT INFORMATION:**

Open with ▼

\* The below listed surge heights are over and above ast

MANDAL/TALUK	DISTRICT	STATE / UNION TERRITORY	NEAREST PLACE OF HABITATION	STORM SURGE (m) *	EXPECTED INUNDATION EXTENT (km)
Khambhat	Anand	Gujarat	Mitli	3.0-4.5	Upto 9.15
Bhavnagar	Bhavnagar	Gujarat	Narbad	3.0-4.2	Upto 2.90
Rajula	Amreli	Gujarat	Patva	2.1-3.8	Upto 1.08
Mundra	Bhavnagar	Gujarat	Vadgam	3.5-3.7	Upto 1.36
Jafarabad	Amreli	Gujarat	Rohisa	1.9-3.5	Upto 0.23
Vagra	Bharuch	Gujarat	Harinagar	1.8-3.4	Upto 0.88
Mahuva	Bhavnagar	Gujarat	Gadhada	1.6-3.3	Upto 0.31
Talaja	Bhavnagar	Gujarat	Talaja	1.6-3.2	Upto 0.39
Bharuch	Bharuch	Gujarat	Kasva	1.9-3	Upto 0.19
Hansot Mahal	Bharuch	Gujarat	Kantivajal	1.7-3	Upto 4.41
Olpad	Surat	Gujarat	Vansva	2.1-2.7	Upto 1.16
Una	Junagadh	Gujarat	Una	0.8-2.7	Upto 0.56
Hazira	Surat	Gujarat	Hajira Ina (ina)	1.8-2.6	Upto 1.33
Chorasi	Surat	Gujarat	Bhimpor	0.8-2.5	Upto 2.31
Navsari	Navsari	Gujarat	Borsi	1.5-2.4	Upto 0.64
Gandevi	Navsari	Gujarat	Mendhar	1.9-2.1	Upto 1.26
Valsad	Valsad	Gujarat	Malvan	1.6-2.1	Upto 0.51
Daman	Daman	Daman and Diu	Daman	1.4-1.8	Upto 0.12
Umargam	Valsad	Gujarat	Umargam	1.6-1.7	Upto 0.21
Dahanu	Palghar	Maharashtra	Narpad	0.7-1.5	Upto 1.05
Palghar	Palghar	Maharashtra	Akkarpatti	0.5-1.2	Upto 0.75
Diu	Diu	Daman and Diu	Diu	0.9-1.1	Upto 0.32
Vasai	Palghar	Maharashtra	Jalsar	0.6-1.1	Upto 1.13
Wada	Thane	Maharashtra	Juchandra	1.1-1.1	Upto 0.21
Borsad	Anand	Gujarat	Tithor	1.4-1.5	Upto 0.52
Alibag	Raigarh	Maharashtra	Ranjankhar Davali	0.3-0.9	Upto 1.90
Bombay	Mumbai City	Maharashtra	Greater Bombay	0.7-0.9	Nil
Kodinar	Gir Somnath	Gujarat	Chhara	0.4-0.8	Upto 0.32
Panvel	Raigarh	Maharashtra	Gavhan	0.7-0.8	Upto 0.72
Uran	Raigarh	Maharashtra	Jasai	0.7-0.8	Upto 2.40
Murud	Raigarh	Maharashtra	Borli	0.5-0.7	Upto 0.21
Dapoli	Ratnagiri	Maharashtra	Tadachakond	0.4-0.5	Upto 0.11
Mandangarh	Ratnagiri	Maharashtra	Danda	0.4-0.5	Nil



# HEAVY RAINFALL WARNING FOR GUJARAT STATE TILL 0830 HOURS IST OF 19<sup>TH</sup> MAY

